



Tharp Way
Chippenham, CB7 5QG
Offers In Excess Of £300,000

Tharp Way, Chippenham, CB7 5QG

A rare opportunity to purchase a detached three bedroom home located within the beautiful and highly sought after village of Chippenham only a few miles from Newmarket.

The property benefits from an entrance hall, sitting/dining room, kitchen, conservatory, ground floor bathroom, three bedrooms and an en-suite shower room to the first floor.

Externally the property has gardens wrapping around the property and a detached garage.

Offered for sale with the distinct advantage of NO CHAIN.

EPC (D)
COUNCIL TAX BAND (C) East
Cambridgeshire

Entrance Hall

With part glazed entrance door, stairs first floor, under stairs cupboard, airing cupboard housing hot water cylinder, radiator.

Living/Dining Room 23'9" x 17'7" (7.26 x 5.36)

With double glazed patio doors and window to rear, telephone point, two radiators.

Kitchen 14'7" x 6'4" (4.47 x 1.94)

With a range of wall and base units, inset stainless steel sink with drainer, Rangemaster

electric oven with extractor hood above, breakfast bar, plumbing for dishwasher, double doors to;

Conservatory 15'6" x 9'6" (4.74 x 2.92)

With double glazed windows and door to garden, wood laminate flooring, wall light points, radiator.

Bathroom

With white suite comprising low level WC, pedestal washbasin, bath with shower over, fully tiled walls, obscured double glazed window to side aspect.

Utility Cupboard

Located externally - with oil fired boiler, double glazed Velux window, plumbing for washing machine.

FIRST FLOOR

Landing

With eaves cupboards, double glazed velux window to rear, window to rear.

Bedroom 1 12'0" x 10'0" (3.66m x 3.05m)

With wood laminate floor, double glazed window to rear aspect, radiator.

En-Suite Shower

With low level WC, wall mounted hand basin, shower cubical with electric shower, radiator, double glazed velux window to front, eaves cupboard.

Bedroom 2 10'7" x 7'2" (3.25 x 2.20)

With double glazed window to side aspect, storage cupboard, eaves cupboard, radiator.

Bedroom 3 7'8" x 7'1" (2.36 x 2.18)

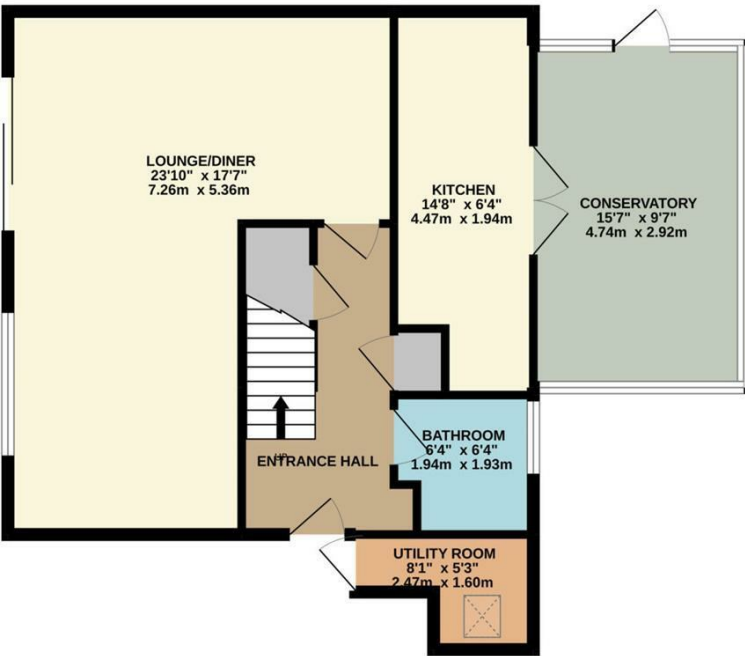
With double glazed window to side aspect, radiator, eaves storage.

Outside

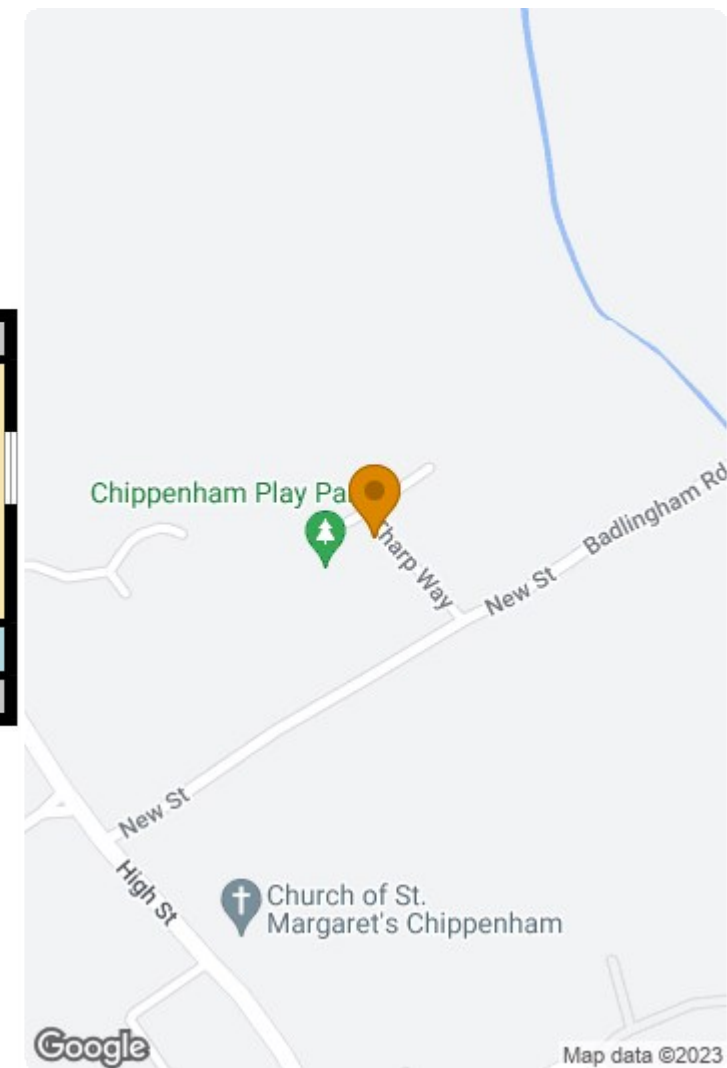
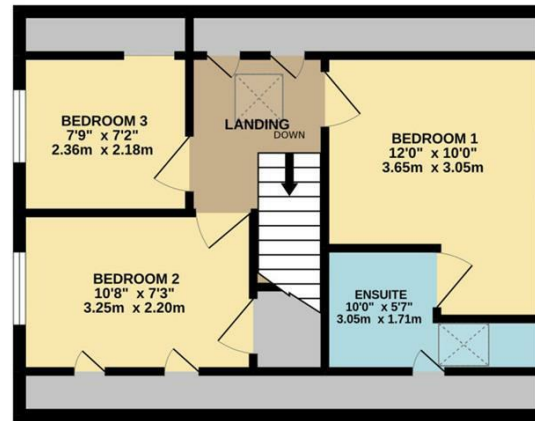
The property benefits from an enclosed, wrap around garden, laid mainly to lawn with patio area.

Detached garage with double opening doors to the front and door access in to the garden.

GROUND FLOOR



1ST FLOOR



Made with Metropix ©2022

Energy Efficiency Rating		Environmental Impact (CO ₂) Rating	
Current	Potential	Current	Potential
A		A	
B		B	
C		C	
D		D	
E		E	
F		F	
G		G	

England & Wales
 EU Directive 2002/91/EC

This document and any marketing relating to the property has been prepared in good faith to give a fair overall view of the property and must not be relied upon as statements or representations of fact. It is suggested that undertake enquiries by inspections, survey or other investigation to ascertain the viability of any purchase. Any areas, measurements or distances referred to are given as a guide only and are not precise and no liability can be accepted for errors arising them therefrom. Photographs are not necessarily comprehensive nor current; no assumption should be made that any contents shown are included in the sale. Morris Armitage have not tested any services or equipment and nothing in these particulars should be deemed to be a statement that they are in good working order nor that the property is in good structural condition.

