



Ox Meadow, Bottisham CB25 9FL

Guide Price £679,000

Ox Meadow, Bottisham CB25 9FL

A superb opportunity to purchase a modern, detached family home set on the edge of this popular development and enjoying a lovely open view to the front overlooking fields and next to a woodland area.

Cleverly extended and improved by the current owners, this impressive property offers comfortable and versatile rooms throughout. Accommodation includes entrance hall, office, cloakroom, living room, kitchen, utility room, dining room, family room, main bedroom with en suite, 3 further bedrooms and a family bathroom.

Externally the property offers an extensive driveway with access to a detached double garage and a fully enclosed rear garden offering a good degree of privacy.

Outstanding family home – viewing highly recommended.

EPC (C)
Council Tax Band

Entrance Hall

Spacious entrance hall with doors leading to Office, Cloakroom, Living Room, Kitchen and Dining Room. Built-in storage cupboard. Stairs to 1st floor.

Office 9'5" x 9'1" (2.89m x 2.78m)

Generous home office. Window to the front aspect.

Cloakroom

White suite comprising low level WC with pedestal hand basin with tiled splash back.

Kitchen 15'6" x 10'8" (4.74m x 3.26m)

A range of contemporary eye and base level cupboards with worktop over. Stainless steel 1 1/2 bowl sink with drainer and mixer tap over. Integrated double oven with 5 ring hob with stainless steel extractor over and full splash back. Integrated appliances including dishwasher and fridge/freezer. Attractively tiled flooring. French doors leading to the rear garden.

Utility Room 7'3" x 6'8" (2.21m x 2.04m)

Range of eye and base level cupboards with work top

over. Stainless steel sink with drainer. Space and plumbing for washing machine and tumble dryer. Half glazed door leading to the rear garden. Tiled flooring with underfloor heating.

Pantry 6'11" x 6'2" (2.12m x 1.88m)

Generous walk-in pantry with work top.

Dining Room 13'5" x 10'7" (4.11m x 3.25m)

Good size dining room with wood effect flooring. Attractive bay window over looking the front aspect. Opening leading to Family Room. Doors to the Kitchen and Hallway.

Family Room 11'5" x 6'8" (3.48m x 2.04m)

Bright family room with the potential for various uses. Opening leading to Dining Room. Window to the front aspect and additional Velux powered window with powered blind, activated via remote control. Wood effect flooring with underfloor heating.

Living Room 18'6" x 12'2" (5.65m x 3.72m)

Generous, bright living room with French doors leading to the rear garden. A further two windows overlooking the rear garden.

1st Floor Landing

Doors leading to all bedrooms, bathroom and airing cupboard.

Bedroom 1 17'3" x 12'2" (5.28m x 3.72m)

Spacious and bright double bedroom with windows overlooking the rear garden. Double built-in wardrobes. Doors to en suite and landing.

En Suite

Contemporary en suite with white suite comprising of low level WC, pedestal sink with mixer tap over and generous walk-in shower. Obscured window overlooking the rear.

Bedroom 2 11'5" x 9'1" (3.48m x 2.78m)

Good size double bedroom with built-in double wardrobes. Double aspect to the front and side.

Bedroom 3 13'5" x 8'7" (4.11m x 2.64m)

Double room with window facing the front aspect.

Bedroom 4 11'5" x 10'11" (3.49m x 3.34m)

Double room with window over looking the rear garden.

Family Bathroom 8'11" x 6'5" (2.72m x 1.98m)

Contemporary bathroom with white suite comprising of low level WC, pedestal sink with mixer tap over, bath and fully tiled walk-in shower. Tiled to half height throughout. Ladder style radiator. Obscured window to the front aspect.

Outside - Front

Spacious double garage (5.94m x 5.90m) with light and power, with further hardstanding driveway providing ample parking. Door leading to rear garden. Small area of lawn with box hedging surrounding the property boundary.

Outside - Rear

Fully enclosed garden with patio areas in front of the Kitchen and Living room. Mainly laid to lawn

PROPERTY INFORMATION

Maintenance fee - n/a

EPC - C

Tenure - Freehold

Council Tax Band - F (East Cambridgeshire)

Property Type - Detached

Property Construction – Standard

Number & Types of Room – Please refer to the floorplan

Square Meters - 186 SQM

Parking – Double garage & hardstanding parking driveway

Electric Supply - Mains

Water Supply – Mains

Sewerage - Mains

Heating sources - Gas

Broadband Connected - Yes

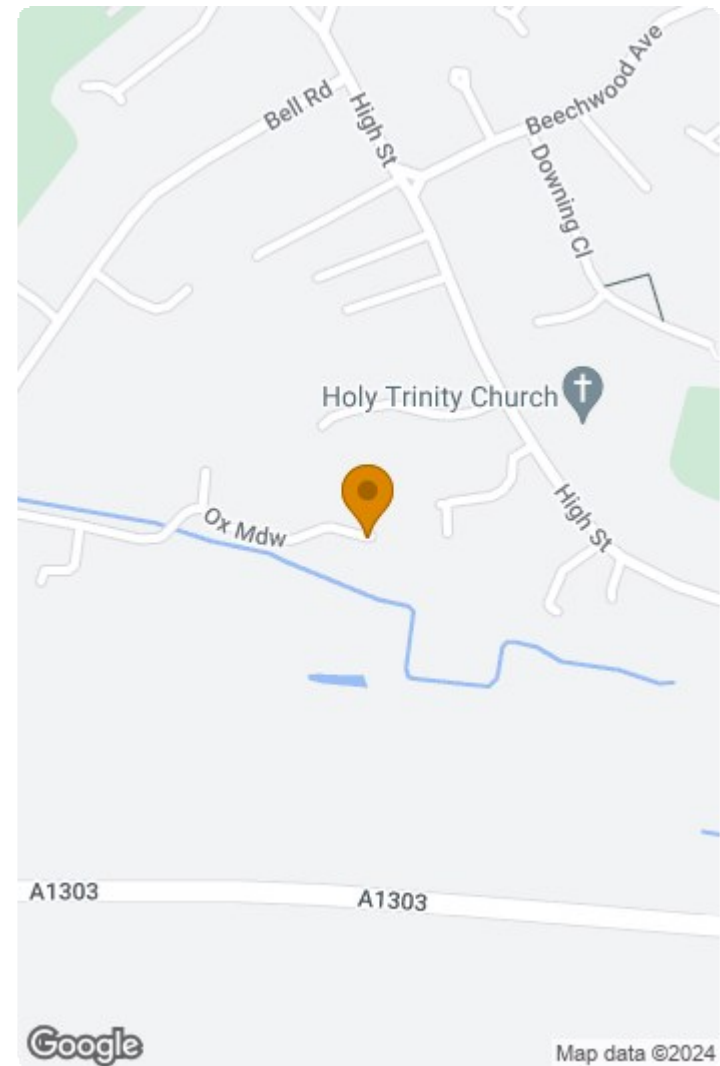
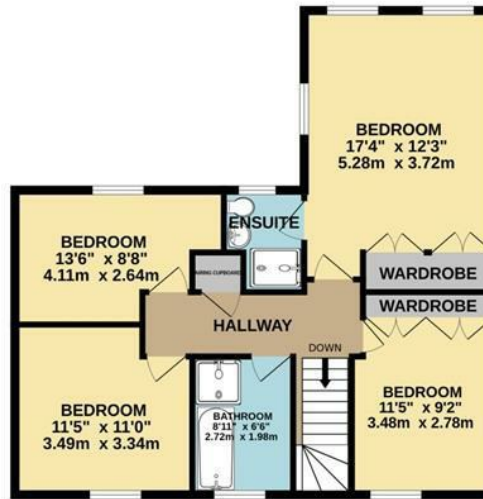
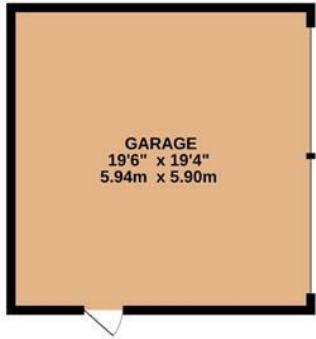
Broadband Type – Superfast available, 935Mbps download, 900Mbps upload

Mobile Signal/Coverage – Good

Rights of Way, Easements, Covenants – None that the vendor is aware of

GROUND FLOOR
1258 sq.ft. (116.8 sq.m.) approx.

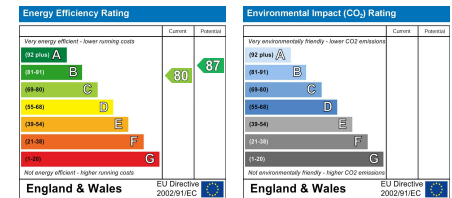
1ST FLOOR
747 sq.ft. (69.4 sq.m.) approx.



83 OX MEADOW

TOTAL FLOOR AREA : 2005 sq.ft. (186.3 sq.m.) approx.

Whilst every attempt has been made to ensure the accuracy of the floorplan contained here, measurements of doors, windows, rooms and any other items are approximate and no responsibility is taken for any error, omission or mis-statement. This plan is for illustrative purposes only and should be used as such by any prospective purchaser. The services, systems and appliances shown have not been tested and no guarantee as to their operability or efficiency can be given.
Made with Metropix ©2024



This document and any marketing relating to the property has been prepared in good faith to give a fair overall view of the property and must not be relied upon as statements or representations of fact. It is suggested that undertake enquiries by inspections, survey or other investigation to ascertain the viability of any purchase. Any areas, measurements or distances referred to are given as a guide only and are not precise and no liability can be accepted for errors arising them therefrom. Photographs are not necessarily comprehensive nor current; no assumption should be made that any contents shown are included in the sale. Morris Armitage have not tested any services or equipment and nothing in these particulars should be deemed to be a statement that they are in good working order nor that the property is in good structural condition.





